

THE FOUNDATION

2024-2025
ANNUAL REPORT
OF THE EAST GRAND
RAPIDS SCHOOLS
FOUNDATION

Upcoming Events
High School Transformation
Grant Highlights
A Cup of Coffee with Kerry Eleveld '88
Donor Roll Call
Alumni Reunions



East Grand Rapids Schools Foundation & Alumni Association —



UPCOMING EVENTS



Tickets are on sale now for the Foundation's fundraiser of the year, HURRAH! On **Saturday, April 26** from 7-11pm, HURRAH! will fill Wege Plaza overlooking Reeds Lake. The big party under a big tent will bring our entire community together for food, friends, and fun showcasing all the opportunity the Foundation and our supporters provide to our students.



It will be a great night for a great cause. Tickets to the event—which has sold out the last two years—and sponsorship opportunities are available now on the HURRAH! page on the Foundation's website, egrsf.org.

SCAN THE QR CODE FOR TICKETS & SPONSORSHIP OPPORTUNITIES



The Gerken Open golf outing is one of the East Grand Rapids Schools Foundation's most anticipated events, and it's sold out for the past four years! This year, mark your calendars for **Wednesday, June 11**, at Thousand Oaks Golf Club. If you want to be part of the fun and support the Foundation's Gerken Fund and the Team Boosters, sponsorship opportunities are available on the Foundation's website at egrsf.org.



SCAN THE QR CODE FOR MORE SPONSORSHIP OPPORTUNITIES



On **WEDNESDAY, JULY 16**, the Kona Ice truck will return to the Middle School parking lot for the Foundation's "Midsummer Ice Dream," offering free frozen treats to everyone in our community from 1-4pm. Just a little thank you from the Foundation for all your support!

ON THE COVER:

Dave Kagan '64 took this photo of the EGRHS production of "Treasure Island" last fall. Kagan is a member of the first class of Pioneers to graduate from the current high school building. He and his wife, Bev (also an EGRHS alum) have children and grandchildren who are also graduates and current students of East Grand Rapids Public Schools. His website is sensitography.com.



Executive Director Message

When the “new” East Grand Rapids High School opened in 1964, the most highly anticipated part of the \$2.3 million facility was a “space age” control center in the front office. Today, we’d call it a switchboard (for those of us that remember the word).

Years from now, when the new high school opens, it will include innovations and technological advances that would have been unthinkable in 1964. It will be a world-class high school built for the next generation of Pioneers. And the Foundation will be a huge part of it.

Over the next five years, thanks to our donors, the Foundation will contribute \$2.4 million—that’s more than the original bond to build the high school 60 years ago—to help the district build the new high school that will be the leading-edge home of teaching and learning our students deserve.

In many ways, that’s what the Foundation has been doing for more than 40 years. This year, for example, we’re contributing more than \$700,000 to our schools, including nearly \$100,000 in performing arts funding alone. We fund programs and classroom enhancements in all our schools and at every grade level.

Thanks to our supporters, that’s what we’re going to keep doing. Sixty years from now, we’ll still be driving innovation and providing what’s next. Our donors have helped us build for the future. With your help, we’ll make that future bright for the next generations of Pioneers.

Amy Stuursma
Executive Director



EAST GRAND RAPIDS SCHOOLS FOUNDATION

Board of Directors

Jenny McMahon, *President*
Amy Knappe, *Vice President*
Carrie Walton, *Secretary*
Tom Blower, *Treasurer*
Beth Chappus
Marissa Clark
Laurie Duthie
David Hall
Robert Huff
Lauren Jacoby
Michelle Kirk
Rob Kowalewski
Alissandra Kruer
Jena Lacks
Lisa Lovell
Kelly Plawinski
Amanda Rogalski
Jim Seufert
Tammy Shreiner
Michael TerHorst

Student Members

Audrey Krajewski, ‘25
Tanyon Sanders, ‘26

Ex-officio

Dr. Heidi S. Kattula, *EGRPS
Superintendent*

Matt Richenthal, *EGRPS Board of
Education Member*

Staff

Amy Stuursma, *Executive Director*

Maria Allen, *Alumni Relations
Coordinator*

Jay Forstner, *Communications Director*

Rosanne Mack, *Accountant*

Carole McDonald, *Office Manager*

Treasurer Message

BY TOM BLOWER



Many of us balance our household budgets each month. We review our income, list our planned and unplanned expenses, and then determine if we have a surplus or need to find additional funds. For some, this is enjoyable; for many, it's painful!

Your East Grand Rapids Schools Foundation operates in much the same way. We track monthly income and expenses, create an annual budget (approved by our board of directors), and then manage it throughout the year.

The East Grand Rapids Schools Foundation is fortunate to have a substantial endowment, currently around \$17 million. While this large balance and its annual distributions simplify our budgeting process, we don't over-rely on it. The endowment provides a small portion of our annual operating expenses, but we also have other income streams, including annual sponsors, events, bequests, and additional fundraisers.

The expense side of our budget is equally important. Numerous costs are associated with running the Foundation, such as salaries, benefits, software, postage, marketing, and professional services.

This 2024/2025 school year marks my sixth and final year as Treasurer. I'm proud that each year, our Foundation has achieved a balanced budget. Whether through increased fundraising or expense management, this "household" has been managed professionally and prudently.

As a personal financial advisor, I work with budgets every day. The East Grand Rapids Schools Foundation's budget is one that I'm very proud of and one that doesn't cause me sleepless nights.

-Tom





FINANCIALS

STATEMENT OF FINANCIAL POSITION

JUNE 30, 2024 (AUDITED)

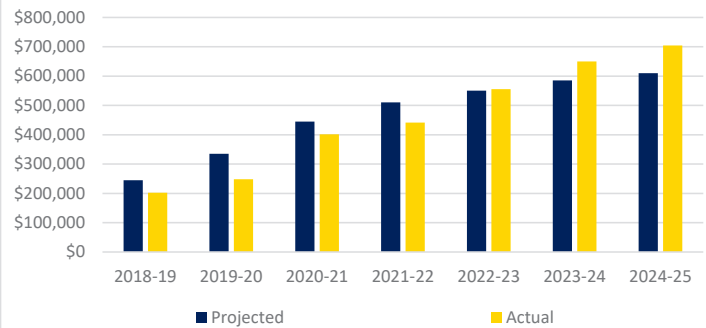
Assets

Cash and equivalents	\$	70,244
Prepaid expenses		10,149
Pledges receivable, current portion		29,507
Investments		16,782,070
Pledges receivable, long-term portion, net		314,000
Total Assets	\$	17,205,970

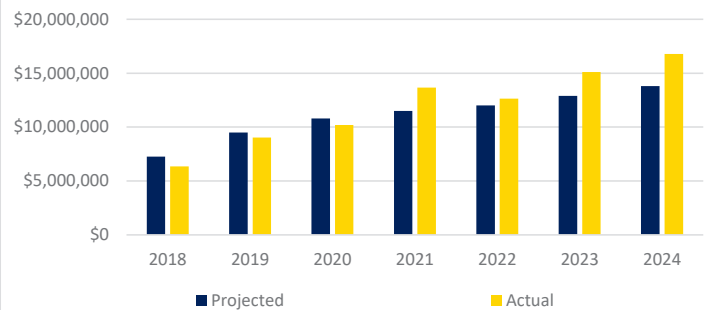
Liabilities and Net Assets

Accounts payable and accrued expenses	\$	10,221
Grants payable, current portion		832,137
Deferred revenue		1,282
Alumni reunion funds held		31,166
Total Liabilities	\$	874,806
Total Net Assets	\$	16,331,164
Total Liabilities and Net Assets	\$	17,205,970

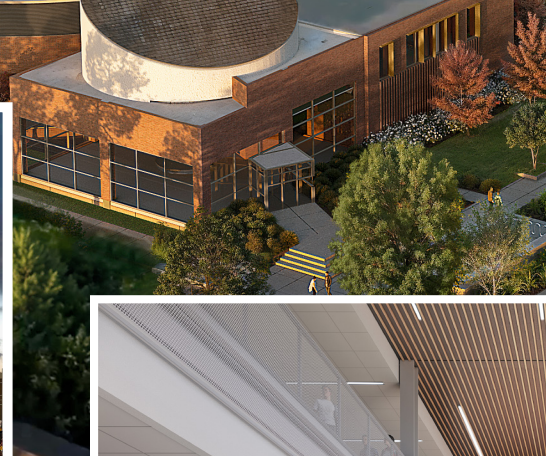
ENDOWMENT FUND AVAILABILITY
(by school year)



ENDOWMENT FUND BALANCE
(as of June 30)



Future Home of the New Pioneers



In November 2023, East Grand Rapids residents approved a bond program focused on renovating the high school, expanding preschool and childcare opportunities, and supporting other K-8 infrastructure lifecycle replacements. The budget for the high school transformation alone is more than \$130 million.

Thanks to our donors, the Foundation is making an extraordinary multi-million-dollar commitment to the high school renovation project. Beginning in 2025, the Foundation plans to contribute \$2.4 million to the project over six years.

“We are proud to provide the support for this historic project that will create a world-class facility for the students of East Grand Rapids,” says Foundation Executive Director Amy Stuursma. “These funds will come from the earnings from our endowment. That means anyone who has contributed to our endowment in our more than forty-year history will truly be part of this effort, and will be part of the new high school. Our contribution will help ensure that the new high school is a teaching and learning environment that is second to none.

“Thank you to all our Foundation supporters for making this transformative commitment possible.”





Jimmy's Friendship Fund for Students in Need

The East Grand Rapids Schools Foundation has always been about providing outstanding educational opportunities. Now, the Foundation is making sure every student in our district has access to every opportunity our district has to offer.

Jimmy's Friendship Fund provides money to cover immediate needs for families within the district that are experiencing financial difficulties. The funds may be used to cover pay-to-participate expenses for extracurriculars, student activity fees, household needs, or personal needs.

We call the fund Jimmy's Friendship Fund because Jimmy Gerken was a friend to all. Jimmy was an East resident and then staff member with special needs. One of his most famous quotes is his response to someone who was bullying

him about his special needs: "That's okay," Jimmy said. "I'll still be your friend."

School principals allocate the funds based on needs they see. Families may also contact school principals or the guidance office as needs arise. So far this year, the Fund has helped families pay for utility bills, participation fees for co-curriculars and sports, and even winter clothing.

Right now, a generous donor has offered to match all donations to Jimmy's Friendship Fund up to a total of \$20,000. That means the power of your donation will be doubled!

You can donate to Jimmy's Friendship Fund quickly and easily by visiting our "Donate Now" page and selecting "Jimmy's Friendship Fund." Thank you!

Mental Health and Wellness Fund Has Matching Gift Available Too



Thanks to another generous donor, your gift to the Mental Health and Wellness Fund will be matched dollar for dollar, too, doubling the impact of your donation.

In 2022, the largest single gift ever given to the Foundation—one million dollars—established the student Mental Health and Wellness Fund that the Foundation will administer for the district. The Fund was created in response to a nationwide student mental health crisis, and it has provided resources for professional development, student training, and Community Connections presentations.

Your gift has the potential to make a profound positive difference in the lives of our students and their families. Thank you again for your support! You can donate to the Mental Health and Wellness Fund quickly and easily by visiting our "Donate Now" page and selecting "Mental Health Fund." Thank you!

CLASSROOM ENHANCEMENT GRANTS THE FOUNDATION

FUNDED IN 2024

SPRING 2024

- NCTE annual convention for English teachers
- Middle School Social Studies Department professional learning in Washington DC and New York
- Keyboards and Mice for Drafting, Design, and Technology Class
- Classroom Library, Materials and Flexible Seating
- Epson Plotter Printer
- Video Cameras for High School TV Studio
- Junior Achievement BizTown for Breton Downs 4th Graders
- Stand-up Paddle Boards for Gone Boarding Class
- Mural with Artist Dylan Bonner '09
- Eagle Scout Project–Middle School Tree Identification
- Physics Equipment Modernization
- Author Visit to EGRPS–Christina Soontornvat
- Camp Manitou-Lin 6th Grade Camp
- Underwriting of FIRST Lego League Grades 1-5
- Cow Eyes for Dissection
- Spectrum Tube Power Supplies, Bulbs, and Spectrum Chart
- Cooking and Nutrition Club Funding
- Motion Detectors and Sensor Updates for Physics Classes
- Elementary Gym Equipment
- Playground Soccer Goals
- The “EGR Bard” High School Upper Level English Learning Experience
- First Grade Literacy Supplies
- Snap Word/Phonics Learning Tools for Kindergartners
- The “EGR Bard” High School Freshmen English Learning Experience
- Math Resources for Small Groups and Independent Learning
- Madrigals Rehearsal Tracks
- iPad Mini for Math Classroom
- Personal Tuners with Clip-on Microphones for Band
- Kindergarten Math Resources for Individualized Learning
- Sing Me a Story Music Composition Program
- iPads for FIRST Lego League Challenge Teams

FALL 2024

- Marching Band Program Annual Support
- EGRMS School Store
- Stratford Trip Tickets
- MidSchool Math Conference
- Non-Fiction Rebuild for Middle School Learning Commons
- Listening Stations for Kindergarten
- Junior Achievement BizTown for All 4th Graders
- High School Robotics Competition Entry Fees
- Grand Rapids Symphony Orchestra Experiences
- March Book Madness 2025
- Orton Gillingham Decodable Books Fiction and Nonfiction
- Elementary Book Repair Machine
- Ignite Engagement Advanced Cohort
- MASP 2024 Fall Conference
- Veterans Day Speaker and breakout sessions
- Drama support - Breton Downs
- Drama support - Lakeside
- Drama support - Wealthy
- Drama support - Middle School
- Drama support - High School
- Speech Therapy Bjorem Materials
- Drafting, Design, and Technology Supplies





Foundation-Funded Listening Stations Open Up Possibilities for Kindergartners

By Riley Kelley, School News Network

SOME OF THE DISTRICT'S YOUNGEST LEARNERS ARE BEING WOWED BY NEW WAYS TO ENGAGE WITH THE WRITTEN WORD.

Kindergarten classrooms at Breton Downs, Lakeside and Wealthy elementary schools are now equipped with Yoto Player listening stations, which allow children to listen to audio recordings of books while they read along.

The handheld players scan and read cards containing audio versions of books in the school's collection. Once the cards are inserted into the devices, students can plug in headphones for a multi-sensory dive into whichever book they're reading.

The equipment was purchased with a \$12,400 grant from the East Grand Rapids Schools Foundation and installation wrapped up in early February. The listening stations quickly became hotspots for students with an ever-growing desire to read.

"Right away it was a hit. They wanted to dig in," Wealthy Elementary kindergarten teacher Carly Schwartz said of her students. "I think, for kindergartners, they all have this urge to learn more, because they're so young and they want all the information.

"For reading, this has just given them something else to add to their toolbox. ... It's another avenue for them to explore books, explore vocabulary."

Schwartz's students are loving the new tech, situated in its own corner of the classroom. The space is a haven for kindergartner Frankie Carlson, who delights in the fact that "it's calm and nobody's making noise."

Frankie's classmate Lena Agerson explained how the players work.

"You turn them on and hold the button for a few seconds, plug in the headphones, you put in the card, it immediately starts introducing the story and then it starts reading it," Lena said. "You don't have to always read; you can also (look) and listen."

"These knobs turn it up louder or not loud," added classmate Niles Breuthin, gesturing to the buttons and dials on the Yoto Player. "And I don't know what this one does," he said of one knob, "but you put the card in there... and you get to listen to the story you want."

After getting situated at his station, Henry Corstange spent some time reading and listening to "Dragons Love Tacos" by Adam Rubin.

"Do you know why I'm reading this? Because I like tacos. It's my favorite food," Henry said.

The best part of his reading time? "Well, hearing it!" Henry said decisively, adding that he also has a Yoto Player at home.

SUPPORTING VOCABULARY, LANGUAGE, FLUENCY

Norah Knoerl, a kindergarten teacher at Breton Downs, wrote the grant requesting funds for the listening stations. She said she did so because the benefits of reading aloud are “immense,” and she wanted to give students an opportunity to do it on their own.

“Readalouds support vocabulary, language and fluency,” Knoerl told SNN, adding that, though teachers do plenty of reading to students on any given day, the listening stations let students pick their own reading exercises and engage with the material personally and independently.

In addition to paying for the listening equipment, Knoerl said the grant covered the cost of more than 50 print and digital books.

“With our grant, we ordered hard copies of all the books as well as the Yoto Cards so the students could enhance their concepts of print as well as comprehension,” she said.

Knoerl said the grant will impact around 1,000 students throughout the district, and that the listening stations will continue to serve learners for years to come.

Schwartz said the listening stations are helping kindergartners build important skills that will stay with them for life.

“We were talking about what we enjoyed about them so far, and a lot of kiddos just said, ‘I just like being able to listen to the story,’” Schwartz said. “I told them that I, even as an adult, love to listen to stories. So that’s something that carries through no matter how old you are.”





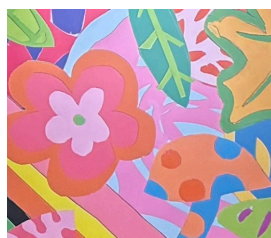
***“This looks like an art school.
It’s like walking through a gallery.”***



That’s what East Grand Rapids Middle School art teacher Holly Lampen hears from new students and new families when they first see the middle school. In Lampen’s tenure, more than ten different art installations have been added inside and outside at the school.

The latest large-scale art project to be added was created through a partnership between the Foundation, the Friends of the EGR Library, and the Middle School PTO. And it was made possible by an East alumnus who used to sneak into the Wealthy Elementary art room to leave drawings of the Little Mermaid on the whiteboard.

The new middle school mural was funded in part by a Foundation grant Lampen wrote in 2024, but it got its start in a fortuitous conversation at a field hockey game. “I saw Holly at our daughters’ East field hockey game and on the sidelines proposed the idea that her students could take ownership and do something special” with a mural for the Teen Room at the library, says Friends of the Library vice president Kyle Watson.





"I assured Holly that the Friends would remove financial barriers and get approvals and encouraged a partnership with the Foundation. The library and schools are a perfect match!"

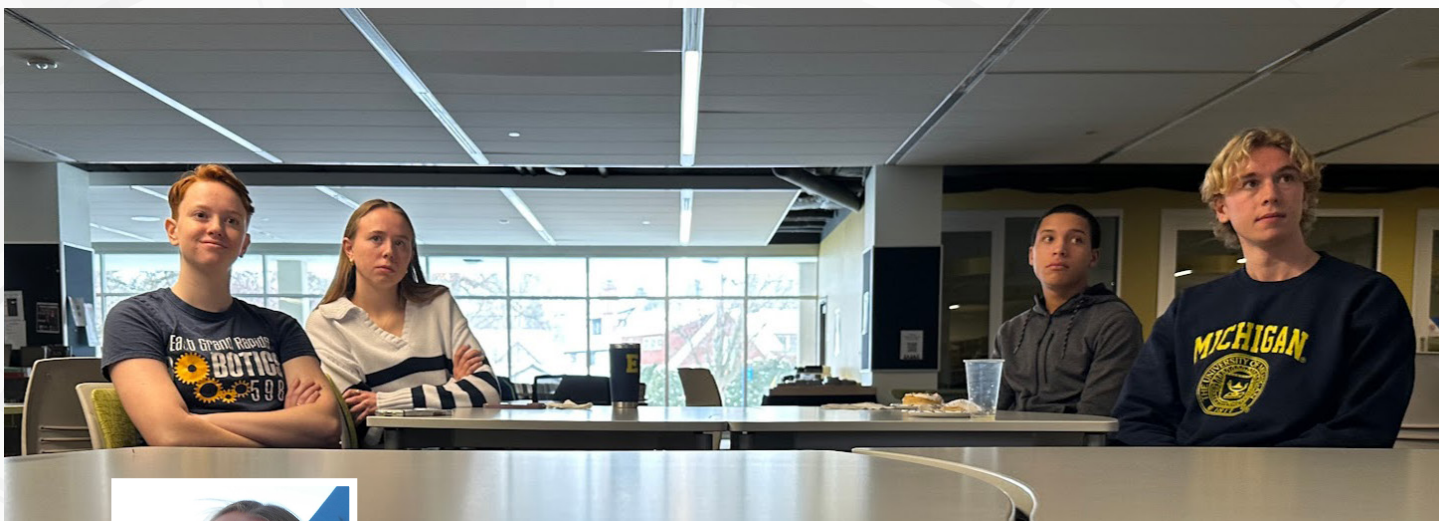
The Foundation grant enabled Lampen to bring in Disney animation artist Dylan Bonner '09 to work with her students on the project. "Dylan is a superstar," Lampen says. "He's truly larger than life. He's this six and a half foot tall guy who you wouldn't expect to be drawing Disney princesses. Athletes relate to him. Art people, Disney people. He instantly gets kids' respect. Last year he had a bunch of football players all trying to perfect their drawings of Ariel. The fact that he's an alum is a bonus."

When Bonner was in 4th grade at Wealthy, Lampen was his art teacher. "I think we started the after school art club because of Dylan," she says. "It was clear how talented he was even then."



Bonner has worked with EGRMS students on the mural that now graces the hallway above the lockers. He's also worked with them on the similar mural that's now in the Teen Room at the EGR public library. And he's working with them now on a third part of the mural that will be added to the Teen Room because the first one was so well received.

The whole project shows the power of partnership, and something else too. "These projects convey our commitment to visual arts," Lampen says. "It shows everyone who comes to our school that we support the arts."



EGRSF STUDENT BOARD MEMBER

Audrey Krajewski's Robotics Diary



My first exposure to STEM was through the Foundation-sponsored Innovation Lab class at the middle school. Mr. Vance encouraged my interest in STEM and introduced me to the middle school's FIRST Tech Challenge Robotics team. Joining the team sparked a journey of creativity, teamwork, and problem-solving that has profoundly shaped my passions for engineering and leadership.

While involved in FIRST Robotics, I've developed a working understanding of Java and Python programming and improved my public speaking, project management, fundraising, and critical thinking skills. I've also had hands-on experience in engineering design. FIRST Robotics introduces a new game each season, bringing new challenges in robot design, construction, and programming. Participants become adaptable problem solvers who can collaborate with their teammates and communicate effectively.

My involvement in FIRST Robotics has offered opportunities to engage in STEM programming throughout East Grand Rapids and beyond. I've connected with FIRST Robotics at all levels of our school district: FIRST Lego League at Breton Downs, Lakeside, and Wealthy, FIRST Tech Challenge at EGRMS, and EGR Robotics at EGRHS. As a high school student, providing mentorship for the elementary and middle school programs has strengthened my belief in the importance of STEM education.



EGR Robotics prides ourselves on our ability to make connections globally. Over the last three years, I have spearheaded our ‘Excellence in Global Relations’ Initiative, connecting us with 16 FIRST Global teams worldwide, from Iran to China, Chile, Norway, Ukraine, Mexico, and Algeria, to name a few. I’ve become a globally oriented citizen who thrives on finding common ground in the curiosity and creativity of teenagers worldwide who share my passion for STEM. These experiences have taught me that we are much more alike than we are different.



None of this would be possible without the support of the Foundation. In addition to helping fund elementary FIRST Lego League teams and middle school robotics, the Foundation provides the high school robotics program with \$6,000 annually so we can pay the entry fees for our regional competitions. This allows us to allocate the rest of our funds to building a competitive robot and fulfilling our mission of inspiring each student to navigate successfully in a global community.

Total Contribution
Available to
Schools in
2024-25:
\$700,000

BY THE NUMBERS:

Grants Funded
in Fall 2024:
21



Total of
Grants Funded
in Fall 2024:
\$84,871.64



Program Support
to District
2024-25:
\$544,420



Support for
Performing Arts
in 2024-25:
\$95,000



Support from Gerken Fund
for Athletics,
Co-Curriculars, and
Kabookie Week in 2024-25:
\$33,500

Alumni Contributions
to the Foundation
in 2024:
\$351,689.72

Total Amount
Contributed to
Class of 2025 Since
Kindergarten:
\$5.5 Million

Alumni Who
Attended
Reunions in 2024:
500+

What We Do, Together



Schools in District
That Benefited
from Foundation
Support:
6

Cups of Kona Ice
Given Away at
Midsummer Ice
Dream:
653

Community
Members Who
Attended a
Foundation Event
in 2024:
1,350

Students in District
That Benefited
from Foundation
Support:
3,137

Spooky bracelets
given away at
Gaslight Village
Terrifying Tuesday:
360

Teacher Awards
in 2024:
4

Teacher Professional
Development
Scholarships Awarded
in 2023-24:
23

Student
Scholarships
Awarded in
2024:
10

Foundation
Annual
Sponsors:
38



VIRTUAL CUP OF COFFEE

KERRY ELEVELD '88

Kerry Eleveld worked as a journalist for nearly 30 years, covering business, politics, and a critical stretch of the LGBTQ movement. As White House Correspondent for The Advocate, she was the first reporter from an LGBTQ news outlet to attend daily White House press briefings and also the first to get a one-on-one sit-down interview with Barack Obama as president. Eleveld's work has won numerous accolades and awards from the National Gay and Lesbian Journalists Association. Her work has appeared in The Atlantic, the Washington Post, Politico Magazine, Salon, and The Daily Beast, and her commentary has been featured on PBSNewsHour, MSNBC, CNN, The New York Times, The Washington Post, the Associated Press, and Sirius XM. Eleveld now resides in Portland, Oregon, with her family, serves as Director of External Communications and Media Relations for the Democratic strategy and donor hub Way to Win, and hosts the weekly podcast Charting The Way Forward.



You can only have one: Rose's caramel corn, an ice cream cone from Jersey Junction, or a Yesterdog. Which do you choose?

Oh man, love it all, but Yesterdog for sure. It's one of a kind--can't be recreated. And I find myself thinking about a midnight rendezvous there much too often for someone who lives on the West Coast.

What was your path from East Grand Rapids to where you are now in life?

Wow, in one word: circuitous. After graduating from Michigan (Go Blue!) I headed to LA for a summer, then moved with a friend to Charleston, SC, and later Greenville. It was in South Carolina that I began writing for publications and forging a path as a journalist. From SC, I moved to San Francisco during the dot-com bubble—eventually got laid off, like nearly everyone! Went back to grad school for journalism at Berkeley, where I fell in love with political reporting, then moved to New York after graduation. There I began writing

for an LGBTQ news outlet covering city/state politics and eventually landed a job at the national magazine, The Advocate, where I covered the Democratic primary between Barack Obama and Hillary Clinton—what a thrill! I eventually moved to D.C. to cover the Obama White House and Congress for The Advocate during an absolutely historic period of advancement for LGBTQ rights. I met my wife in D.C. and we moved back out to the Bay Area for her doctoral internship. One pandemic and two kids later, we decided we loved the Pacific Northwest (and my brother and his family are in Seattle), so we moved to Portland, OR, where we currently reside. I also recently hung up my reins as a journalist—it was the only sane thing to do for any number of reasons. I currently work as a political strategist.

What specific thing did you learn in East that has enabled you to be successful?

Never give up—there's almost always daylight somewhere behind whatever is clouding our vision. I learned that

through some great friends and some amazing teachers. I also managed to play on every bad team we had at the time—specifically women's basketball and softball. I learned to like being the underdog—be scrappy, get creative, work hard, and you can usually find a way to win some big ones. Every news outlet, organization, and constituency I have worked/reported for has been an underdog of some sort that found a way to win some big ones.

What were you like in school?

Well, which year are we talking about? Depressed sophomore and junior year, I think it's fair to say. I don't know how people experienced me then, but I don't think I was my best self. Senior year, things really turned around. I grew into some leadership roles, felt far more sunny/optimistic, and was hopefully a source for good most days, though far from perfect. By my senior year, I hope that I treated people well, brought some joy, made some people laugh, and was a little kinder than I had been earlier.

Did you have a favorite teacher or class?

Lots of great teachers at East. I would have to say Mrs. Graham's AP English class, my sophomore year, was where I started to see the potential in writing—what great literature can do. I was (and still am) a very slow reader, but I just felt so motivated by her class to show up prepared so I could soak in what she was teaching us. Also, Mr. Kemp, who taught computers and Algebra (or was it Geometry?). I just really liked that little Teddy Bear of a dude.

If you had to choose one moment in one location to serve as the signature moment of your East school experience, what would it be?

That's a tough one. Two-a-day basketball practices and my basketball buds stand out as formative. I'll never forget a magical post-basketball season 2:00 a.m. walk through Gaslight Village on a snowy night—completely sober, I might add—that felt like a scene ripped straight from a Dickens novel. Homecoming prep, making the floats, and especially riding in a homecoming car stand out as fun highlights. But I have to say, what rises above all of it was, senior year, sitting around the kitchen table at the house of my friend Allison Armstrong (now Montague) with a half dozen friends on many a night and chewing over just about anything and everything life had to offer at the time. We had some seriously solid chats and I am beyond grateful for the bonds formed there and what felt like a home away from home.

What do you know now that you wish you'd known then?

Such a hard question to answer. Life's always a mystery that's yet to be solved. There's no cheating time. But if I could tell my younger self something it would probably be that there's so much goodness ahead.

Do you stay in touch with many people from East Grand Rapids?

Some people, for sure. I'm on a text chain with our crew from senior year. But I've lived so many places now, and I

find that I usually stay in touch with one core person from each one of those places who grounds me in that phase of my life.

What advice do you have for young East alums who are just starting out?

Just get out there and do it—try some things, move some places, see what fits. We are limited in life only by our imagination and the amount of effort we are willing to put in.

Who else would you like us to have a virtual cup of coffee with?

Hmm, so many options. How about Kat Olin (née Allen), who is literally my oldest friend in the world (my second oldest friend is Jenny Fee, but I'm guessing you're already in touch with her. ;)



PETE SOUZA, OFFICIAL OBAMA WHITE HOUSE PHOTOGRAPHER

Bonus question: What are you glad we didn't ask you about?

Nothing. I'm forever a journalist at heart—no question is too invasive.



Want to read more virtual cup of coffee alumni interviews? Visit egrsf.org/alumni/alumni-profiles.html

ANNUAL FUND SUPPORTERS

\$5,000 or more

Anonymous*
 Ray '71 & Kristin Abraham*
 The Adamy Family*
 Sue '56 & Marty Allen*
 The Bissell / Kruer Family*
 The Connor Family*
 Damian & Sara deGoo*
 Laurie Duthie & Mark Secchia '91*
 Don Gerken '67
 Rick & Carol Godfrey*
 John & Deanna Green*
 The Hoekstra Group LLC*
 The Iakiri Family*
 Tom & Mary Sidell '61 James
 Kurt '73 & Lori '76 Lacks
 KV '02 & Jena Lacks*
 David '57 & Linda Mehney Family*
 Meijer, Inc.*
 NPF Investment Advisors*
 Pure Architects*
 Matthew Richenthal*
 Elaine Rongey*
 The Peter & Joan Secchia Family
 Jim '58 & Susie '59 Sebastian
 Aaron '93 & Jill Smith
 Abby & Rich Sorota*
 Varnum LLP*

\$2,500 - \$4,999

David '60 & Sibley '62 Barrett
 The Cherven Family*
 DFCU*
 Tripp '99 & Lucy Frey
 Jay Hoult '56, *in memory of Jack Hoult '29,*
John Hoult Logie '57 and Stephen F. Hoult
 '73
 Lovell Hand & Orthopedic Center*
 Bill & Melissa Marsh*
 Martheen Wanty
 White Mitten Movers*

\$1,000 - \$2,499

Ashley Agerson '97 & Julia Becker
 Tom '77 & Beth Ainsworth
 Terri Burg Amann '71
 Steve Baker
 Scott '89 & Natalie '89 Bernecker*
 Jeff Bergers '73 & Cindy Braak
 John & Janet Boyles
 Brett Brinker & Heather Slay '89
 The Christopherson Family*
 Stuart & Rita Citron
 Dave '57 and Nancy Cook Family*
 Jeanne & Mitch '83 Cook Family, *in*
honor of the EGRSF staff
 Erik Daly '00 & Jessica Bloom '00

ERDI Partners, Inc., *in honor of*
Dr. Heidi Kattula
 Michael '63 & Sheila Hannah
 Laura Huizenga '76
 Margaret Idema '67
 LMCU*
 The Lingwood Aguayo Family
 Terry McGovern & Carol Paine-McGovern
 Steve & Jenny McMahon*
 Jane '79 & John Meilner
 The Milanowski Family
 Kelly & Todd Plawinski*
 Amanda & Adam Rogalski*
 Jessica Ruppert, *in memory of Peter Ruppert*
 Joan Secchia
 Andrew & Tamara Shreiner*
 Beth Wells Skaggs*
 Brent & Diane Slay
 Keith & Meghan Swayman
 Gregg & Julie Teegardin Family*
 Chris & Sarah VanDeven
 The Walton/Gray Family
 Elizabeth Welch '88 & Brian Schwartz '84
 Nick Thole & Amy Turner-Thole*
 Laura Young '78
 Brad & Fleur Zylstra

\$500 - \$999

William E. Alt
 Jeff '69 & Kathy Boylan
 Dan & Lynne Brown
 Susan & Dev Butler
 Steve & Christine Duquette
 Sue Spicer Elliott '65
 Omar & Elizabeth Flores
 Chuck & Julie Frayer
 Brian & Karey Hamrick
 Jason Hannah & Hanna Jaworski
 John & Janyce Huff
 R. Dale & Shirley Lausch
 Chris & Joan Panopoulos Family Fund
 Kerry & Matt Parent
 Jim & Marie Preston
 Heidi & George Roberts
 Bob Russell
 Buck & Judy Saunders
 Marilyn Lankfer & Jeffrey Schad
 Kaitlyn Day Shannon '04, *in memory of*
Roderick Day
 Peter '89 & Amy '89 Stuursma
 The Tupper Family
 Russ & Chris Visner
 Carrie Walton & Justin Gray
 Tim & Lisa '01 Weaver
 Charles Winslow & Judy Sopeland
 Bruce C. Young '74

\$250 - \$499

Kurt & Michele Bishop
 John Balardo '83
 Jim '56 & Betsy Barton
 Nicole & Kelly Bedore
 Jenny Berglund & Smith Roberts
 Mark '87 & Shelly Bernecker
 Fred & Kathleen Burkhardt
 Pam & Marty Buschle, *in memory of*
Cal Blair '08
 Kestutis & Ingrid Civinskas
 Carly & Jason '01 Colegrove
 Margaux Day '02, *in memory of*
Roderick Day
 David & Elizabeth Filkins
 Sue & Tom Hoane, *in memory of Jonathon*
Hoane '88
 Tia Hooper '92
 Scott & Kristi Keil
 Theresa Keyes
 Chris & Amy Knape
 Mary Kretschman '64
 Nicholas M. Leech '62
 Brad & Emily Lorden
 Paul & Rosanne '83 Mack, *in memory of*
Constance Ellis
 Amy & Bill Mackay
 Donald D. Malcolm & Jean Magolan
 Lynne Boyles Marino '77
 Abby Nagher
 Jerrel K. Ralph '49
 Jessica Ruppert, *in honor of Katie Michell*
and the East Vision
 Tim Saunders
 Raymond Saylor
 Mike '65 & Mary Sebastian
 Robert Shapton & Mary Reagan Shapton
 Thomas Spurgat '72, *in memory of deceased*
members of Class of 1972
 Richard & Mary Stevens
 Martha Teichner '65
 Aletta VanderPlaat & Dan Lorenz
 Nate & Keri VanDrunen
 Deb & Greg Weaver

\$100 - \$249

Anonymous
 Steve '86 & Maria Allen
 The Artz Family
 Jon & Susan '66 Bachelder
 Chris & Heidi Bailey
 Laurie Beard, *in memory of Paul Beard '96*
 Scott R. Brundage
 Carol Campbell '81
 The Caverly Family
 Paul Claesson

Cynthia M. Conway '64, *in memory of Carol Murray* '64
 Doris Cole '55
 Ed & Linda Cox
 Mike & Mary Ann Crete
 Judy Bertsch D'Arcangelis '70
 Shonnee Day, *in memory of Roderick Day*
 Traci '88 & Rick Douglas
 Robert & Kathleen (Yukon) '70 Eager
 John '69 & Louise '69 Edison
 Margaret Griffith Eskilson '55
 Kathryn & Tom Fatuross
 Michael J. Fishman '56, *in honor of David L. Fishman* '80, *Deborah L. Fishman* '82, and *Jonathon J. Fishman* '86
 Harvey Fixler '62
 Connie '64 & John '64 Flynn, *in memory of Bill Clements* '66
 Andrea Fotias '75
 Thomas Getz & Margaret Burrows-Getz
 Darrow & Flip '79 Goodspeed
 Helen (Fairbanks) Graham '81
 Jim & Katie Green
 Dave & Beth Hamm
 David '64 & Jean Hitchcock
 Barbara Hohman, *in honor of her daughters Jennifer* '91, *Marianne* '93 and *Hillary* '02
 Thomas Hollingsworth '69
 Jeff & Anne Huizenga
 Jane Hunt
 Win '65 & Kyle '70 Irwin
 Robert Israels
 Frances E. Johnson '70, *in memory of Edgar Hare Johnson* '71 and *in honor of Ray* '71 & *Kristin Abraham*
 Judith Joseph
 Mike & Sue Keil
 Norman Keller
 Jenelle & Sean Kelsch
 Bill Krissoff '64
 Philip M. Leech '58
 Nancy Letherby, *in memory of Frank Letherby*
 Tim Lewis '82
 James MacDonald '81
 Joe Martin '53
 PK '74 & Darrell Mason
 Michael & Lois McCardell
 Ian McDonald '08
 Michael & Carole McDonald, *in memory of Linda Kehm*
 R.A. & N.L. McGarrity
 Terry McIlhargey
 Anne Benjamin Miller '61, *in honor of Don Gerken* '67
 Norman Miller '61

Richard Miller '62, *in honor of Bert Froyland*
 Thomas '72 & Glynis Miller
 Claire Minneman '02
 John J. Murphy '78
 Jack Nichols, *in memory of his wife Jane*
 Kris Pachla & Anne Marie Carson
 Linda Patterson
 Mark & Barbara Periard
 Richard Perkins '52
 Mary Wennerstrom Phillips '57, *in honor of the Class of 1957*
 Richard J. Pryce '55
 Kevin & Amy Pugh
 Thomas H. Remien '75
 Carolyn Skaff
 The Hon. Sara Smolenski & Linda Burpee '74
 Diane St. Claire & Thomas Northway
 Albert & Joan Stauffacher, *in honor of Rafi Okoro*
 V. Parker Tuthill '74 & Martha Bryant Tuthill '75
 Woodrow & Maureen (Ellis) '78 Tyler
 Mary K. Weadock
 Jim '85 & Susan Weiss, *in honor of the EGRSF staff*
 Virginia Welch '65
 George Whinery '66
 The Wisniewski Family, *in memory of Rob Wisniewski* '04
 Michelle L. Yates '73

\$20 - \$99

Anonymous, *in memory of Parker Spindle* '19
 Glenn & June Anderson
 Tom & Debi Ankney
 Gary & Mary Sue Barnes, *in honor of Michelle Day* '97
 William F. Bissell '53
 Carla Blandford '58
 Cher Bledsoe-Kiesel '71
 The Bruce Family
 Barbara Cone
 Kathy & Jay Cragwall
 Julie DeLoria, *in honor of Rosanne Mack* '83
 Gaylen & Diane Demarest
 Steve '76 & Monica '82 Edison
 Kirk '85 & Kirsten Essenmacher
 Jay & Julie Forstner
 Anne Genthe
 Linda Graham
 Barbara Isenberg
 Sarah Porter Jury '69, *in memory of deceased members of the Class of 1969*
 John & Ellen Osterhart
 Joel & Heide Rollings

Jim '66 & Sheryl Siegel
 Margo Lacey Sirrine '66
 Judith H. Subar
 Katie Tucker '09
 Mark Weadon, *in honor of Carole McDonald*
 Kristen Reed Von Doersten '94
 Eric & Leah Wendling
 Gabriele O'Brien Wiarda '08
 Larry & Betsy '64 Willey
 Gilbert & Barbara Wynn

Matching Gift Donors

Bank of America Foundation
 Dell Technologies
 Goldman Sachs
 Grand Haven Area Community Foundation
 Lilly Endowment, Inc.
 Pivotal Ventures
 Regions Bank
 TEGNA Foundation
 U. S. Bank Foundation
 Walton Education Coalition

United Way Donors

Brett & Carlye Allen
 Erin Grin '90
 Dr. Heidi S. Kattula
 Heather Krajewski
 Dr. Marjolijn van der Velde

* Annual Sponsor

RECOGNITION

In this report, we acknowledge everyone who has supported our mission through donations or sponsorships in the 2024 calendar year. Although we appreciate all participants in Foundation-sponsored events, they are too numerous to list here. We strive to be accurate, but errors may occur. We welcome assistance from readers in bringing any inaccuracies to our attention, and will try to make corrections in the online version of these lists. **Thank you, as always, for your support!**

STAR (STAFF, TEACHER, APPRECIATION, RECOGNITION) APPRECIATION AWARDS

Jake Babb Caden Butler
Hannah Bailey The Cunningham Family
Gwen Barnes Megan & Andrea Goodrich
Camille Bauer Becky Barnes
Jenny Bergstrom Ron Yu & Family
Kristen Borak The Stanley Family
 Harry & Ron Yu & Family
Steve Brinks Caden Butler
 Lucy Custer
Jackie Brown Megan & Andrea Goodrich
Sarah Cannon The Jones Family
Heather Carlson Brady Ross
Charissa Chapman Sam Connor
Trina Connelly Megan & Andrea Goodrich
Jen Doyle The Jones Family
Dave Dublis Sam Connor
Maggie Edison Nolan Brooks
 Sam Connor
Tim Farmer Lucien Bruck
Ashley Frayer The Mercier Family
 Lucy Richenthal
Erin Grin Becky Barnes
Jordan Harper Megan & Andrea Goodrich
Jenna Jenkins Gwyneth Hiller
Corey Kapolka Megan & Andrea Goodrich
Michelle Kirk The Cunningham Family
Holly Lampen Caden Butler
Kathy Larson Caden Butler
 Cheri, PJ, Jackson & Callum Reid

Kurtis Lehman Barbara Cone
John MacKenzie Caden Butler
Kerry McKee Becky Barnes
Alex Mellema James Albers
Kaitlin Merpi Miles Aramburu & Family
Katie Michell Chloe Custer
Pete Miller Thomas Conklin
Mackenzie Nissen Simone Aramburu & Family
Patrick Parkes Owen Stropkai
Samantha Pugia Lizzie Boshoven & Family
Cheryl Radecki Charlotte Mack
Patrick Reed The Rockwell Family
Meg Richards Mollie McDonough
 Ron Yu & Family
Cassandra Rood Caden Butler
Liz Schaefer The Mercier Family
Jenna Simmonds The Boshoven Family
Danielle Smith Caden Butler
Winona Tinholt The Mercier Family
Scott Titus Sam Connor
 Wilson Eckley
Kevin Vance Thomas Conklin
Brian VanderBee Oliver Owen
 Bennett Winkel
Tessa Villanueva Sam Connor
Jennifer Webb The Custer Family
Carmen Weigel Jack Bennett
 Megan & Andrea Goodrich
Isabella Wilson Caden Butler



AWARDS DINNER 2024

GOLD SPONSORS

Founders Brewing Company
Greenville Partners
IDville - Beth & Bob Milanowski
Tom & Vicki Kimball
Elizabeth Welch & Brian Schwartz

COMMUNITY SPONSORS

Elizabeth & Dan Bogo
John & Lindy Bolling
Janet & John Boyles
Steve & Christine Duquette
Michael & Lynette Ellis
Judy Frey
David & Leslie Hooker
Sarah & John Jackoboice
Jamie & Stephen Kusmierczak
Hank & Liesel Meijer
Michelle & Chris Rabideau
Reagan Marketing + Design
Mike & Trish Reid
Sally & Larry Robson
Al & Kim Rossi
John Sebastian
David Smith & Peggy Child
Chris & Sarah VanDeven

SUPPORTERS

Nick & Shellie Adamy
Michael Albert
Brett & Carlye Allen
Steve & Maria Allen
Tony & Gwen Barnes
Bill & Diane Baxter
Jeremy & Beth Beard
Kristin & Brian Boer
Dennis & Amy Donohue
Linda Dudley
Chad & Gretchen Dutcher
Jay & Julie Forstner
Twink Frey
Romulo Garcia & Maria Mora-Bowen
Nancy Gaskell
Ted & Mary Louise Gedra
Andrea Haidle
Paul & Kerry Hegele
Bill & Melissa Hoefer
David & Leslie Hooker
Robert Hooker
John & Janyce Huff
Rob & Jessica Huff
Robert Israels
Cherry Jacobus
Margy Jones
Brad & Michelle Kirk



David & Sarah Kugler
Russ & Jill Lampen
Greg & Tracey Lewis
Paul & Rosanne Mack
Lynne Boyles Marino
Becky & Kirt Martin
Matt & Katie McIntosh
Bill Mehney
Jim & Jaclyn Mehney
Anne Benjamin Miller
Anthony & Polly Morey
Jim & Carolyn Morse
Randy & Kris Renker
Elaine Rongey
Ann & Tim Sheridan
Nick & Kelsey Shroeger
Karen Henry Stokes
Peter & Amy Stuursma
Candace R. Titus
Josh & Kathy Tyron
Nick & Amanda Velting
Stuart Wegener
John & Carroll Wiener
Bob & Tracy Wolford
Christine Begthel Yoas

HURRAH! 2024

UNDERWRITERS

Alpine Events
Charter Capital Partners
Grand Wealth Management
Infusion Kitchen and Bath by ETNA
Inhulsen Law
Print Metro
Andrew & Logan Schmidt

GOLD SPONSORS

Luke & Ellen Chervenky
Joe & Katy Levan

BLUE SPONSORS

Barnes & Thornburg LLP
Brad Ditmar Team - eXp Realty Grand Rapids
The Flermoen Family
Boyd & Jane Henderson
John & Katy Humphrey
Media Place Partners
Jessica Ruppert
The Stewart Family
Team Anders Realtors

COMMUNITY SPONSORS

Anonymous
Access24 Self Storage
Jessica Bloom & Erik Daly
Custer
Justin & Brittany Dailey
David & Stephanie Dublis
Joseph Elias & Dr. Eanas Yassa
Jason & Michelle Grinnell
Nathaniel & Laura Kaleefey
KM Online Marketing
Layla & Nicholas Kuhl
Stephen & Jamie Kusmierczak
Lovell Hand & Orthopedic Center
Jeff & Shannon MacKeigan
JW Marriott Grand Rapids
Ben & Jessica Massie
Joel & Melissa Mitchell
New Mill Capital
Tom & Liz Pantlind
The Patra Family
The Pope Family
Mike & Trish Reid
Rogo Marketing & Communications
Tamara & Andrew Shreiner
Sarah & Christopher VanDeven
Venture Insurance Group Inc.

PATRON SPONSORS

John & Lindy Bolling
Stefano & Kari Bordoli
Brooktree Capital Mgmt. - Brian Ellis & Hunter Lewis
Patrick & Amy Campbell
Marissa & Landon Clark
Thomas Cook & Hanna Smith
Kim & Greg Crane
Mark & Deb Crane
Dennis & Merritt DeLano-Taylor
Design Heating and Cooling, Inc.
Jason & Stephanie Doublestein
Eli Dragolov
Christine & Steve Duquette
Brett & Ashley Foster
Nick & Karrie Gumina
Steve & Katie Harney
Bill & Andrea Hecker
Brad & Karen Hunter
Huntington Capital Markets
Mark & Lauren Jacoby
Keil Lasik Vision Center
The Koziara Family
Krupp Law Offices PC
Jane & Paul McCarthy
Andrea Melvin & Dave Eaton
Angela & Michael Meyers
Noco Provisions
Kris Pachla & Anne Marie Carson
John & Grace Pantlind
Reagan Marketing + Design
Kim & Al Rossi
The Rowland/Jayne Family
Andy & Ginny Rundquist
Jason & Joyce Russell
The Russell Family
Shelley Schmidt
The Thompson Family
Carrie Walton & Justin Gray
Brian & Kris Ward
Steve & MeiLi Wieringa
Robert & Susan Wolford

EVENT SUPPORTERS

Martin Aramburu & Juyon Ham
Mark & Kate Austin
Braden & Carol Baldwin
Eileen Brader
Ren & Cj Brander
Dave & Britt Campbell
Dave & Dori Couvreur
Kyle & Patty Cunningham
Traci & Rick Douglas
Jay & Julie Forstner
Bill & Melissa Hoefer
Melissa Janes
Ross & Angela Keilen
Paul & Rosanne Mack
Michael & Carole McDonald
Joe & Kylyn Mead
Anne B. Miller
Kevin & Christine Oliveira
Brian & Racquel Self
Peter & Amy Stuursma
Nick & Amanda Velting



GERKEN OPEN 2024

EVENT UNDERWRITERS

S. Abraham & Sons
Custer

GOLD SPONSORS

Beacon Hill at Eastgate
Dart Frog Creative
Brad Ditmar Team - eXp Realty Grand Rapids
Fox Acura
Gimme's Par & Grill
Grand Rapids Ear Nose and Throat
Hungerford CPAs and Advisors
KV and Jena Lacks
Miller Johnson
The Peter and Joan Secchia Family
Stifel
Swaney Sales
Two Men And A Truck Moving and Storage

BLUE SPONSORS

Christopherson Orthodontics
GLT Packaging
Print Metro

HOLE SPONSORS

East Grand Rapids Schools Foundation
East Grand Rapids Team Boosters
Garage Beer
Grand Rapids Label Company
Growtrust Partners - Tim Sullivan, Investment Advisor Representative
The Knuble Family
Larry & Jean Pinckney
Rhoades McKee
Ronda Auto Centers

“The East Grand Rapids Schools Foundation has done more to advance education in our community than any other single organization. The Foundation is the perfect word—the rock that we build this community on—the very backbone of every child’s future at EGR!” -Mark Wells, EGRHS teacher



MEMORIAL GIFTS

MICHAEL ABRAHAM '97

John & Pat Bergstrom
Joseph '83 & Kathryn Corey
J.A. & Kathy Cragwall
Dr. Andrew & Leslie Forman
Jena Keller
David & Jennifer Khorey
Michael Mooney '76
Leyton Nelson '05
Joan Panopoulos
Mike & Kaye '75 Powell
Jay Rumbach & Leah Seigel
Fr. Ted Sirotko
Pat Waring
Elizabeth Welch '88 & Brian Schwartz '84
Tim & Mary Ann Young

LYNN BARDO

Tom '77 & Beth Ainsworth
Bill & Mary Ford
Nancy Letherby

VAL BERNECKER

Twink Frey '56

CAL BLAIR '08

Tom & Debi Ankney
Mary Kay & Mark Baker
Tom & Tracey Bird/The Bird Fund at
The Boston Foundation
Jeff & Tomye Blair
Meredith Bonner '08
Brendan Campbell '08
Joel & Rosemary Chansky
Justin Chronowski '08
Michael '80 & Lynette Ellis & Family
Mariann & Stanley Gonsior
Pete & Sandy Hinz
Ann Kazanowski-Mapes
Sally & John Malnor
Carole & Michael McDonald
Michael Meehan '08
Charlie Rhodes '08
Elaine Ronney
Christine Nowak Root '08
Emily Roth '17 & Jake Stewart '18
Michael, Betty & Caroline '20 Roth
Mikey '15 & Sarah Roth
Peter '89 & Amy '89 Stuursma
Hannah Wagner '08

MARTHA BRADSHAW '77

EGR Class of 1977

HERBERT "WILL" BRENNER

Brendan Ringlever '88

KATHY KRAMSVOGEL ERDMAN '77

EGR Class of 1977

JOHN FREY '58

Dave '57 & Nancy Cook Family
Twink Frey '56
Holly & Erick Johnson
Philip M. Leech '58
Peter '89 & Amy '89 Stuursma

JUDY GERKEN

Tom '77 & Beth Ainsworth
Brian & Terri Clay
Peter '89 & Amy '89 Stuursma

SUSAN GRIFFITH GLEACHER '60

Margaret Griffith Eskilson '55

LIN LOGAN

Joanna Grant

PHIL HERTEL

Barbara Cone

STEPHEN HOULT '73

Cher Bledsoe-Kiesel '71
Jay Hoult '56

SHIRLEY KIISK

The Village of Heather Hills

TOIVO KIISK

Maria & Steve '86 Allen
The Forstner Family
Rosanne '83 & Paul Mack
Carole & Mike McDonald
Peter '89 & Amy '89 Stuursma

JANE KOEPF

Dave '57 & Nancy Cook Family

DAVID MCCOY

Karen Coleman '62
Wendy Jones
Nancy Letherby

ELIZABETH "BETTS" RUSSELL

Anonymous
Richard & Kathleen Ammons
Lee & Karen Begrow
Judie Childress
Linda Dudley '65

Andrew Durren
Danica Elder
Wally Hook
Nancy Letherby
Faye & Mike Miles
Michael Nairn
Bob Russell
Tim & Ann Sheridan
Mary & Ron Tambellini
Tara White

PAUL SCHUKOW

Barbara Cone

RICHARD H. SIDELL JR. '63

Tom & Mary Sidell '61 James

RALPH SIMMS

Tom '77 & Beth Ainsworth
Burt Bach '71
Kip Barber '76
Ray '85 & Suzanne Baumruk
Michelle Benjamin
Timothy '80, Michael '82 & Barbara
Cone
Betsy & Stan Cuneo
Dean Ditto '84
Lisa & Dan Forman
Gerald R. Ford Airport Authority
Chantal Hoey-Sanders '88
Dave & Denine Ike, Dave Jr. and
Carrie Ike & Family
Kevin & Marcia Kennett & Family
Steve & Mary '64 Kretschman
Rosanne Ellis Mack '83
Abraham Maioho
Brian & Dori Moore
Carol Moore
Lou Murray '64
Randy & Angie Pierce
Brendan Ringlever '88
Dawn & Dan Robinet
Jim Rockwell '76
Marjorie Kay Stevenson
Scott '82 & Kris Taber
Tim Thoits '76
Maureen Ellis Tyler '78
Peter '72 & Jeanne Uhl
Kathy Watkins '75
Quentin Williams '83

JOHN YOUNG '60

David Smith '63 & Peggy Child '64

DESIGNATED FUND SUPPORTERS

MURPHY AINSWORTH SCHOLARSHIP

Ben Ainsworth '47
Ben '73 & Elizabeth Ainsworth
Cal Ainsworth
Charlie Ainsworth
Tim '77 & Julie Ainsworth
Tom '77 & Beth Ainsworth
Abby & Darrel Delaney
Cory Essenburg
Gail Ainsworth Essenburg '70
Amelia Grant
Joanna Grant
Barbara Grzegorzczak '74
Jordan Grzegorzczak
B&R Peterson
Richard & Lorraine Ridenour
Jacquelin Tanis

PETER CORONEOS SCHOLARSHIP

George & Mary Ann Coroneos
Julie Shike

GERKEN FUND AND JIMMY'S FRIENDSHIP FUND

Tom & Debi Ankney
Kurt & Michele Bishop
Brett Brinker & Heather Slay '89
The Bruce Family
Ed & Linda Cox
Kathy & Jay Cragwall
Judy Bertsch D'Arcangelis '70
Traci '88 & Rick Douglas
The Ege Family, *in honor of Coach Anne Petrucci*
Nick & Melissa Erikson
Connie '64 & John '64 Flynn, *in memory of Bill Clements '66*
Don Gerken '67
Helen (Fairbanks) Graham '81
Jim & Katie Green
Tia Hooper '92
Jane Hunt
Mike & Sue Keil
Chris & Amy Knappe
James MacDonald '81
Michael & Carole McDonald, *in memory of Linda Kehm*
The Milanowski Family
Anne Benjamin Miller '61, *in honor of Don Gerken '67*
Abby Nagher
Thomas H. Remien '75
The Peter & Joan Secchia Family
Jim '58 & Susie '59 Sebastian
Mike '65 & Mary Sebastian
Robert Shapton & Mary Reagan Shapton



Margo Lacey Sirrine '66
Thomas Spurgat '72, *in memory of deceased members of Class of 1972*
Diane St. Claire & Thomas Northway
Nate & Keri VanDrunen
The Walton/Gray Family
Mark Weadon, *in honor of Carole McDonald*
The Wisniewski Family, *in memory of Rob Wisniewski '04*

DR. HEIDI KATTULA PROFESSIONAL LEARNING SCHOLARSHIP

Education Research & Development (ERDI)
Owen-Ames-Kimball Co.
Pure Architects
Stifel

MENTAL HEALTH AND WELLNESS FUND

Anonymous, *in memory of Parker Spindle '19*
Steve '86 & Maria Allen, *in memory of Parker Spindle '19*
Terri Burg Amann '71
Mark '87 & Shelly Bernecker
Robert & Kathleen (Yukon) '70 Eager
Andrea Fotias '75
Twink Frey '56, *in memory of John Frey '58*
Jason Hannah & Hanna Jaworski

Tom & Sue Hoane, *in memory of Jonathon Hoane '88*
Judith Joseph
Mary Kretschman '64
Michael & Lois McCardell
Ian McDonald '08
Normal Miller '61
Thomas '72 & Glynis Miller
John J. Murphy '78, *in memory of Rosemary Murphy*
Kerry & Matt Parent
Aaron '93 & Jill Smith
Woodrow & Maureen (Ellis) '78 Tyler
Nate & Keri VanDrunen
Russ & Chris Visner
George Whinery '66
Larry & Betsy '64 Willey
Michelle L. Yates '73

PETER G. RUPPERT SCHOLARSHIP

Armed Forces Thanksgiving

PARKER SPINDLE GENUINE HEART FUND

EGR Class of 2019 (*see detailed list of 2019 reunion gifts on page 28*)

2019



Class of '19 Honors Deceased Classmates

When the class of 2019 gathered for their five-year reunion last November, they had their fallen classmates, Parker Spindle and Ella Thorne, in mind. Parker passed away in November, 2021; Ella had passed away a year earlier.

After the reunion, the class decided to honor Parker, who wore number 12 on the East soccer team, by raising \$1,212 to contribute to the Parker Spindle Genuine Heart Scholarship, which was established in 2021 by his parents Jenelle Spindle and Rob Spindle to remember Parker and his genuine heart as well as to provide additional funding for social emotional/mental health programs, training or staffing in the East Grand Rapids Public Schools.

"I am extremely proud of our class's generosity in their donations, but I am not surprised," says class of 2019 president McKeathan Robertson. "It goes to show how strong an impact Parker had on his classmates' lives. He was a positive force to everyone that spent time with him. We all miss him dearly. The mission of Parker's scholarship is so important as well; it is really special to be able to both honor Parker's memory and support people that share a bit of his spirit and values."

Contributions to the Parker Spindle Genuine Heart Scholarship Fund can be made on the Donate page on our website.

REUNION GIFTS

Class of 1964

Anonymous
Jill (Golden) Baltzer
Cynthia (Conway) Mulnix
Mary Whittier Gore
Clarissa (Pond) Hesner
Liz Johnson
Susan Whittier

Class of 1974

Mark Armstrong
Bob Blackburn
Bruce Brooks
Adrian Callaghan
Jim Hagerup
Julie (Murray) Hawsworth
Bill Knappe
Christine Feighner-Linabury
Luci Staples McCall
Roberta (Zaremba) Polzin
Deborah Sandberg-Bowers
Michael Silverstein
Lynne (Andrews) Whitelaw

Class of 1984

Mike Allen
Karen (Simon) Budde
Laura (Cohen) Bull

Terry Byam-Egan
Ann (Hipskind) Campbell
Tim Cary
Dan Clark
Karen (Krywicki) Couvelaire
Ann (Rankin) Douglas
Katie (Stocksdale) Feldman
Brad Fletcher
Carole Clodfelder Hammerslag
Chris Krupp
Betsy Muir
Thania Panopoulos
Andrew Rougier-Chapman
Brian Schwartz
Suzi (Ammond) Shirley
Ned Snell
Andy Steers
Julie (Lewis) Torem
Adam Wolman
Laura (Kundtz) Yaeger
'84 Reunion Gift

Class of 1994

Andy Ballema
Jenny (Morris) Bauernfeind
Jeff Conway
Sarah Conway
Tom Crawford

Matt Duiven
Kristy (Marshall) Eckman
Derek Harnish
Scott Herz
Christine Lynch
James Peterson
Ryan Sawyer
Louie Sobong
Amy (Jarvis) Turner
'94 Reunion Gift

Class of 1999

Andrew Irwin
Mike McLaren
Staci Rickman
Ben Thompson

Class of 2019

Jill Agents
Isabel Albaitis
Max Albuseiri
Kyra Allen
Livvie Berger
Ben Biermacher
Christopher Boylen
Jackson Brandstadt
Maura Burns
Griffen Caul
Colton Cheney
Daniel Coles
Jack Collins
Zola Crow
Jack Distel
Ryan Distel
Teddy Drake
Chase Fisher
Amelia Flemming
Ana Gehl
Sydney Higgins
Katie Huizenga
Nina Kallil
Alex King
Nicholas Lambert
Connor Lannon
Laura Levine
Will Marsh
Maddy Mayer
Reed Mehney
Macy Oakes
Izzy Osbourne
McKeathan Robertson
Erin Rogers
Alaina Romanowski
Miriam Ronda
Ellie Roubal

Sophie Sears
Patrick Smith
Ryan Smith
Sloane Teske
Anna VanderLaan
Madeline VanGessel
Dylan Walker
Jack Ward
'19 Reunion Gift

Alumni Hockey Game

Matt Albers
Charlie Fee '21
Sam Forstner '14
John Green
Jeff MacKeigan '91
Jim Mehney '98
Drew O'Brien '10
Baden Rushmore '23
Ryley Sikkenga '21
Tyler Sikkenga '23
Jake Stewart '18
Peter Stewart '14
Jim & Ann Stuursma
Mitchell Stuursma '23
Alex West '17
Andrew West '21
Andy Winkler

UPCOMING REUNIONS

1965 - September 12-13

1975 - September 27

1985 - October 11

1990 - June 20-21

2009 - August 9

2015 - November 26

2020 - Thanksgiving Weekend/TBD



CLASSES OF 1955, 1960, 1970, 1980, 1995, 2000, 2005, 2010, the countdown to your class reunion in 2025 has begun. Now is the time to start planning your unforgettable celebration. Need help getting started? Contact Maria Allen, Alumni Relations Coordinator at mallen@egrps.org. It's time to reconnect, reminisce and celebrate the memories that shaped you.



IN REMEMBRANCE

We extend our deepest condolences to the families and friends of the following alumni and EGRPS staff who passed since our last publication. They will be greatly missed. We apologize for any errors or omissions. Please help us stay informed by calling us at (616) 235-3535 or emailing to egrsf@egrrps.org.

1941

Doris (Dingeman) VanEss

1944

Arthur Prange Jr.

1947

Joan (Voigt) VanderPloeg

1948

Nancy (Parrott) Hatton
Marilynn (Davis) Hodgson
Ellen (Rittenger) Trumbo

1949

Barbara (Spees) Begrow

1951

John Hibbard

1952

Barbara (Pfluecke) Goretzka
Saralyn (Norton) Lerch
Carl Shook

1953

Harold Cornelius II
Melvin Johnson, Jr.
Robert "Ted" Luce
William Reeves, III

1954

Howard Ellis, Jr.
Mary "Mindy" (Anderson)
Spillane
William Stellin

1955

George Hitler, Jr.
James McColl
Rita (Wilson) McDonald

1956

True (McDonald) Burley
John Chandler

1957

Bruce MacLean
Mary (Remien) Mulvihill
Thomas Spooner

1958

John Frey
Frederick Stephen "Steve"
Larned
John McDonald
Charles "Chip" Tappan

1959

Dorothy (Albers) Douse

1960

Susan (Griffith) Gleacher
Dennis Spooner
Jeffrey Van Den Bosch

1961

Thompson Clay

1962

Craig Miller
Judy (Tucker) Spooner

1963

Harvey Howitt
Richard Sidell, Jr.

1964

Nancy Boshoven
Gail (Baron) Courim
Jack Faude
John Fisher
Thomas Sorenson

1965

Eric Adamy
Lawrence Ballard
Gerald Muste
Judith (Duffy) Sunderman

1966

Martha (Williams) Arnson
Bettina (Thomas) Hall
Keith Norwalk
Kerry Norwalk

1967

Alice Cutter
Jim Gaertner
Gail (Humphrey) Vidro

1968

William Watkins

1969

Jeanne (Romence) DeJong
Scott Feighner
Cheryl (Burke) Stirdivant

1970

Jill Woller-Sullivan

1973

Angela (Jourden) Banker
Richard Schneider

1974

James Bylenga
Joe DiCesare
Robert Kazma
Daniel Matthews
Terry Risch
Clifton Rowden

1975

James Lincer
Mitchell Thompson

1977

Martha Bradshaw
Marylynn Webster

1978

Bill Tupper

1981

Joel Penny

1982

David Abbott

1987

Anderson Alexa

1998

Jayne Karrip

EGRPS FORMER STAFF

Lynn Bardo
Marian (Miller) Black
Herbert "Will" Brenner
Irene Essenmacher
Philip Hertel
Martha Jane Koepf
David McCoy
Elizabeth "Betts" Russell
Ralph Simms



THANK YOU TO THE MEMBERS OF THE LOUISE NEESLEY LEGACY SOCIETY

Ray '71 & Kristin Abraham
Murphy Ainsworth^ '10
Bob^ & Val^ Bernecker
Ren Brander '55
Barbara Cone
David^ '57 & Nancy Cook
Peter Coroneos^ '96
Linda Kehm^
Dave '57 & Linda^ Mehney
Kristine S. Mulder '71
Louise Hitt Neesley^

Marjorie Neubig^
Chris & Michelle Rabideau
Charles H. Rose^ '40
John D. Rose^ '53
The Peter^ & Joan Secchia Family
Rich & Abby Sorota
Janet L. Stauss^
Karen Steffensen Sturges^ '58
Peter '89 & Amy '89 Stuursma
William^ & Shirley^ VandenBerg
William^ '56 & Patricia Waring

^ deceased

Interested in ways to include the Foundation in your estate plans? Call EGRSF Executive Director Amy Stuursma at (616)235-3535 or email her at astuursm@egrrps.org.



A Mother and Daughter Legacy

"I went to kindergarten in one of the two houses that were where the Wealthy Elementary playground is now. There's beautiful learning here. Teaching is an art form. I want to keep that alive."

Kris Mulder '71 established the Dr. Winifred W. Mulder and Ms. Kristine S. Mulder Mother/Daughter Fund in 2019. "My mother and I were both dedicated teachers," Kris says. "I used my power of devotion to advocate for kids."

Ms. Mulder established the fund after her mother passed away in 2018. Dr. Winifred Mulder worked in East Grand Rapids Public Schools for 28 years. Kris Mulder was also a teacher, having spent 36 years teaching in Grandville Public Schools. "Many members of my family were teachers," Kris says. "Teaching was in our blood."

The goal of the Mulder Fund is to honor requests that support kindergarten students and kindergarten teachers. In the last

few years, the fund has helped pay for kindergarten play kitchens and the read-aloud listening stations described on page 10, among other grants. "Kindergartners do such neat things," Kris says. "They get so absorbed in what they do."

In addition to establishing the fund, Kris Mulder became part of the Louise Neesley Legacy Society by including the Foundation in her estate planning. "I had a wonderful education in East Grand Rapids," she says. "I went to kindergarten in one of the two houses that were where the Wealthy Elementary playground is now. There's beautiful learning here. Teaching is an art form. I want to keep that alive."

FEELING LEFT OUT?

You can be included in our next report of donors by giving to the Foundation today. Open the camera on your phone and scan the QR code below to be taken directly to our Donation page. Or if you prefer, fill out this simple form and mail it to us. Every gift makes a powerful positive difference in the lives of our students.

GIFT AMOUNT:

- ☐ \$100
☐ \$250
☐ \$500
☐ \$1,000
☐ Other _____

Name: _____

Address: _____

City: _____ State: _____ Zip: _____

AMOUNT ENCLOSED: \$ _____

☐ VISA ☐ MC ☐ DISCOVER

Card Number: _____

Expiration Date: _____

PLEASE MAKE CHECKS

PAYABLE TO:

East Grand Rapids Schools Foundation
 2915 Hall Street
 East Grand Rapids, MI 49506



**DONATE
 NOW AT
 egrsf.org**



East Grand Rapids Schools Foundation

2915 HALL STREET SE | EAST GRAND RAPIDS | MI 49506

NON-PROFIT ORG.
US POSTAGE
PAID
GRAND RAPIDS, MI
PERMIT NO. 907

THANK YOU 2024-25 ANNUAL SPONSORS

as of March 1, 2025

PIONEER ANNUAL SPONSORS

The Adamy Family
The Bissell / Kruer Family
Damian & Sara deGoa



David & Linda Mehney Family
Elaine Rongey

GOLD ANNUAL SPONSORS

Anonymous
Ray & Kristin Abraham
Sue & Marty Allen
The Connor Family
Laurie Duthie & Mark Secchia
Rick & Carol Godfrey



John & Deanna Green
Joel & Shannon Iakiri
KV & Jena Lacks
Matthew Richenthal
Abby & Rich Sorota

BLUE ANNUAL SPONSORS

The Cherveney Family • DFCU Financial • Lovell Hand & Orthopedic Center
Bill & Melissa Marsh • White Mitten Movers

Visit egrsf.org to see our Community Level Sponsors